

complete  
range  
optimised

**HWR**

**SOLIDGrip** ORIGINAL  
HWR QUALITY

Following our promise to develop our products further and further, and to optimize them in the interest of our customers, our **SOLIDGrip** vices have been re-designed to offer a greater benefit to the user.

Our top priority is to ensure that the development of our **SOLIDGrip** series maintained identical functionality of and compatibility with our previous centering vices.

In concrete terms, this means that the interference contour of the individual models is optimized, but all within the previous contour lines. The mounting of the **SOLIDPoint®** zero-point stud in the 52 and 96 grid has remained the same, as have the associated support heights and clamping ranges.

This ensures that existing CNC programs can be used and the vices can be mixed 1:1 with the previous **SOLIDGrip** and compatible centering vices\*, or they can be replaced by the new **SOLIDGrip** centering vices.

The new design **SOLIDGrip** replacement jaws and spindles can also be easily used with the previous **SOLIDGrip** models and compatible centering vices.

The new **SOLIDGrip** centering vices are characterized by the following further developments in addition to the usual features and compatibility:

**SOLID  
GRIP**

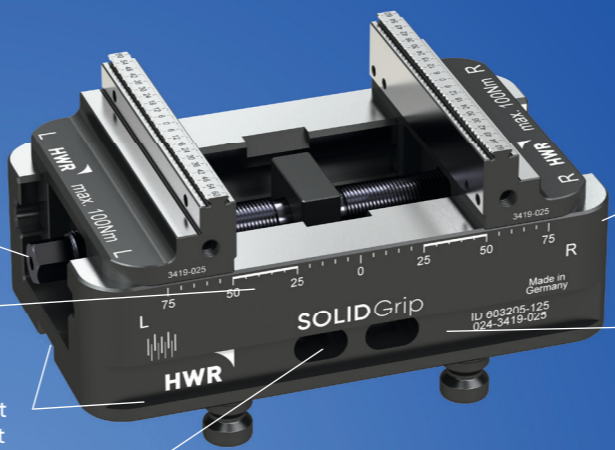


more wear-resistant Spindle coating

more clearly scaling

alignment groove and clamping edge for direct mounting and alignment

improved chip and water flow



corrosion protection through re-oxidised surface

gripper groove for improved handling and automation pickup

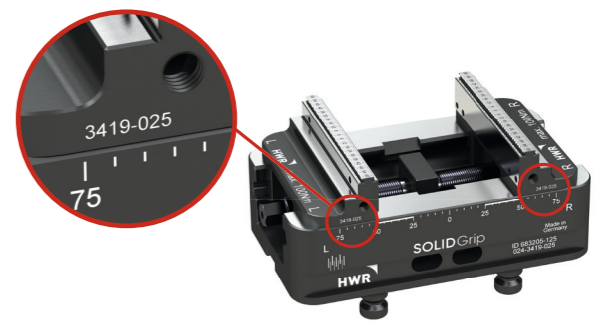
THE NEXT LEVEL  
ORIGINAL HWR QUALITY

Compatible with Makrogrip by Lang\*  
(\*except recesses for Robotrex automation gripper)

**INSTRUCTIONS FOR USE**

For the use of all centering vices the following should be observed:

Since all **SOLIDGrip** jaws are matched in pairs during production, they should only be used in this configuration. This applies to all pre-assembled jaws as well as to replacement jaws. The jaws should not be exchanged or mixed individually when they are mounted on a centering vice. The jaws are identified as a matched pair by using the same serial number. When delivered, the jaw pair number corresponds to the number on the base body.



**HWR SPANNTECHNIK GMBH**  
Rosa-Luxemburg-Straße 5  
D-28876 Oyten

Tel.: + 49 (0) 4207 6887 0  
sales@hwr.de  
www.hwr.de

**HWR**