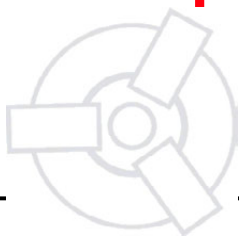


Futtertype: Schunk Rota-S 400 S plus 400

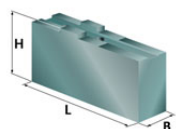


HWR Spanntechnik GmbH
Lübke mannstraße 13
28876 Oyten
Telefon (04207) 6887-0
Fax (04207) 6887-15
email: info@spannbacken.de

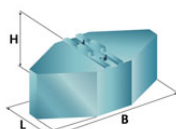


Markenspannbacken

Weiche Aufsatzbacke mit Kreuzversatz



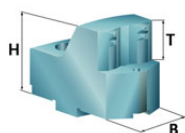
B	H	L	kg/Satz	Typ	Ident-Nr.	Werkstoff
50	80	180	13,7	CU40	236012	C15
64	76	130	11,8	CU401	237401	C15
64	76	180	16,5	CU402	237402	C15
64	102	155	15,3	CU403	237403	C15
64	127	155	18,7	CU404	237404	C15
80	80	130	16,2	DP40	237405	C15
50	160	155	25,2	CU406	237406	C15
50	80	180	5,1	CW40	238005	Aluminium



Weiche Segment-Aufsatzbacke mit Kreuzversatz

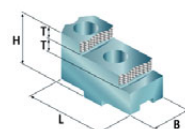
B	H	L	kg/Satz	Typ	Ident-Nr.	Werkstoff
330	85	160	40,2	CQ40	239005	C15
330	90	160	12,0	HT40	240005	Aluminium

Gehärtete Greiferspannbacken, Außenspannung



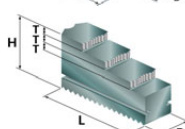
B	H	T	kg/Satz	Typ	Ident-Nr.	Werkstoff
50	71	33				
Spannbereich						
87-98/ 103-114/ 119-131/ 136-148/ 153-164			5,6	LY50	9901053	16MnCr5
169-181/ 186-198/ 203-215/ 220-232						
237-249/ 254-266/ 271-283/ 288-300						
93-104/ 109-120/ 125-137/ 142-153/ 158-170			5,6	LY51	9901054	16MnCr5
175-187/ 192-204/ 209-221/ 226-238						
243-255/ 260-272/ 277-289/ 294-306						
115-126/ 131-143/ 148-160/ 165-176/ 181-193			5,6	LY52	9902736	16MnCr5
198-210/ 215-227/ 232-244/ 249-261/ 266-278						
283-295/ 300-312/ 317-329/ 334-346/ 351-363						
122-133/ 138-150/ 155-167/ 171-183/ 188-200			5,6	LY53	9902735	16MnCr5
205-217/ 222-234/ 239-251/ 256-268/ 273-285						
290-302/ 307-319/ 324-336/ 341-353/ 358-370						

Gehärtete umkehrbare Aufsatzbacken



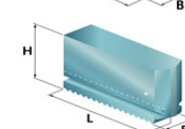
B	H	L	T	Typ	Ident-Nr.	Werkstoff
45	75	130	20	GX40	249005	16MnCr5

Gehärtete einteilige Stufenblockbacken



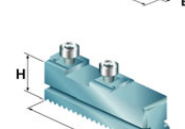
B	H	L	T	Typ	Ident-Nr.	Werkstoff
45	93	167	20	FST40	260040	16MnCr5

Monoblockbacken mit Modulschrägverzahnung



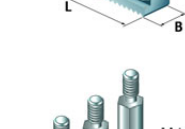
B	H	L	Typ	Ident-Nr.	Werkstoff
45	93	176	BL40	257040	16MnCr5

Grundbacken mit Modulschrägverzahnung

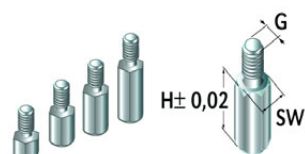


B	H	L	Gewinde	Typ	Ident-Nr.	Werkstoff
45	55	160	M16*1,5*40	MFG400	265005	16MnCr5

Auflagebolzen



G	H	SW	Typ	Ident-Nr.	Werkstoff
M8	5	13	IU05	229008	C15
M8	10	13	IU10	229009	C15
M8	15	13	IU15	229010	C15
M8	20	13	IU20	229011	C15
M8	25	13	IU25	229012	C15



Gripper Hartmetall



Ausdrehvorrichtung



Stangengreifer



Reinigungsplatte



Pendelbacken